



## KIA ORA E TE WHĀNAU/GREETINGS FAMILIES

Talofa lava

Nau mai, haere mai. Welcome to week 5 of term 2. This week is Samoan language week. We have 23 children of Samoan descent or 7% of our school.

The 2024 theme for Samoa Language Week is 'Tautua i le alofa, manuia le lumana'i – Serve in love for a blessed future'.

There are a range of resources on this page;

<https://www.mpp.govt.nz/programmes/pacific-language-weeks/samoa-language-week/>

Here are some everyday phrases that we will try and use at school.

**Gagana o aso uma** *Everday phrases*

**Common Phrases**

Tālofa lava	Greetings / Hello
Tōfā	Goodbye
Fa'amolemole	Please
Fa'afetai	Thank you
Malie / Fa'amalie atu / Fa'amālūlū atu	Sorry
Tulou	Excuse me

I was fortunate to have a sneak peak around the new building block progress last week. It is coming together really well and is going to be a tremendous learning space for our tamariki which will open up many new learning opportunities. We look forward to a grand opening later this year and sharing it with our whole community.

**This week our Whakatauki o tēnei wiki/ whakatauki of this week is;**

**Whāngaia ka tupu ka puāwai**

That which is nurtured blossoms and grows

*This Whakatauki speaks to the importance of nurturing our tamariki and each other along with our environment. It speaks to the important job we have as whānau, kaiako and ākonga to feed our brains and grow as people.*

Leia and Whitney have been spotted this week living our values to a high standard and putting their learning into action.

Whitney and Leia love being road patrollers, they say that the best bit is 'keeping all of the kids safe'. Thank you for giving up your time girls, and contributing to make our community a safe place to be.

You are awesome Whitney and Leia!



## WHAT'S COMING UP AT RUTHERFORD

*I tēnei wiki - This Week*

- 28 May Interschool Football (Year 4-6)
- 28 May Board of Trustees meeting
- 29 May Whānau open morning
- 31 May Staff only day (School closed)

## UPCOMING EVENTS - TERM 2

- 3 June Kings birthday holiday (School closed)
- 24-28 June Scholastic Book Fair
- 25 June Rippa Rugby interschool (Year 4-6)
- 25 June Board of Trustees meeting
- 26 & 27 June Celebrate learning at Rutherford whānau meetings
- 27 June Combined schools Matariki event (Kapa Haka)
- 28 June Matariki holiday (School closed)
- 5 July End of Term 2
- 22 July Start of Term 3

Other events may be added as the term progresses.

Hubs will send notices for upcoming events through the parent portal.

## UPCOMING FUNDRAISERS

- 20 June Matariki Disco
- 23 June Car Boot Sale
- 12 June Matariki Raffle tickets go on sale
- 24-28 June Scholastic Book Fair
- 26 June Matariki Raffle Drawn
- Term 3 8 September Brick Show

All details for events will be advised. If you would like to help with fundraising please contact us at [office@rutherfordprimary.school.nz](mailto:office@rutherfordprimary.school.nz). All help is appreciated!

## ATTENDANCE MATTERS

- OVERALL TO DATE: **89%** Of the 14% of children absent,
- LAST WEEK: **86%** **9.1%** of those were absent due to illness.
- LATE TO SCHOOL: **1.7%**



### WHAT'S ON TOP? *He aha kei runga?*

#### Auckland Transport Support

We are grateful to Auckland Transport who have increased their presence around school to ensure the safety of our children.

Please make sure you park in the right places to support our ongoing efforts to keep our children safe.

#### Open Morning

We are looking forward to welcoming families on Wednesday morning to join in with our learning. This is an open morning so feel free to pop in for as long as you are able. This could be for 5 minutes to 2 hours.

This is an opportunity for you to join in the learning with your children. This is not an opportunity to talk to teachers about your individual child's learning, that will happen later in the term. We hope that lots of you are able to join us.

#### Staff only day 31 May

A reminder that on Friday 31 May we have our Ministry of Education scheduled staff only day. The purpose of this day is to provide staff with time to meet together to develop our curriculum. School will be closed on this day. SKIDs will operate if they have enough children.

If you'd like to book your child in, please contact Diksha on; Mobile: 0212134652 or Email: rutherford@skids.co.nz

Kia kaha, kia maia, kia manawanui  
Be Strong, be brave, be determined

Noho ora mai  
Amanda Bennett  
Tumuaki/Principal

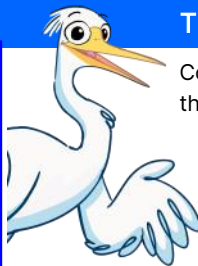
### WHAT'S BEEN HAPPENING AT RUTHERFORD

#### *I tērā wiki - Last week*

Mrs Clegg had been teaching children how to create musical instruments out of balloons! Thank you Mrs Clegg for designing rich experiences to help us to grow our vocabulary, and have a lot of fun too.



### THE RUTHERFORD WAY



Congratulations to the following children this week who show us The Rutherford Way.

- Karys Lukupa
- Alex Lees-Newall
- Anna Velijanski
- Leo Villares Tatton Turner
- Tyler-John Hemana



At Rutherford we show *Whanaungatanga*.

- We make our friends and whanau feel welcome to our school by saying, 'hello, kia ora, mōrena.
- We work and play together.
- We accept others' differences and include them.



Congratulations Kaavya, Audrey, Lilly, Natat, Lilith, Sophia, Jack and Jovan! You have reached **25 Ka Pai Rewards!** Special classroom reward coming your way!



Rooms 7 and 12 were the winning classrooms! Congratulations







## WHAT'S BEEN HAPPENING AT RUTHERFORD

### *I tērā wiki - Last week*

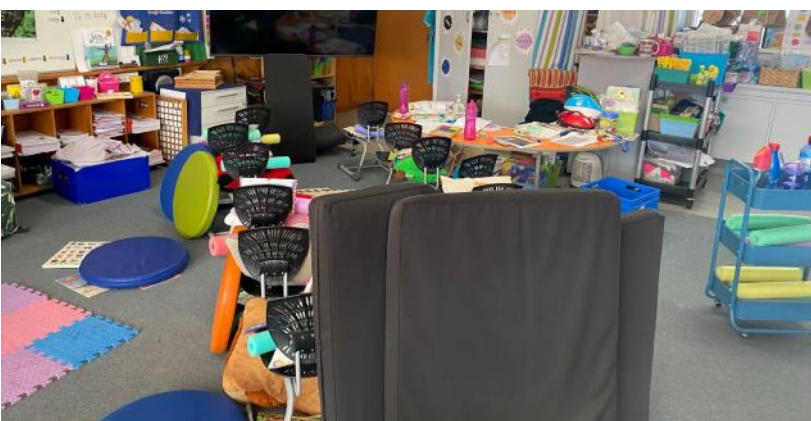
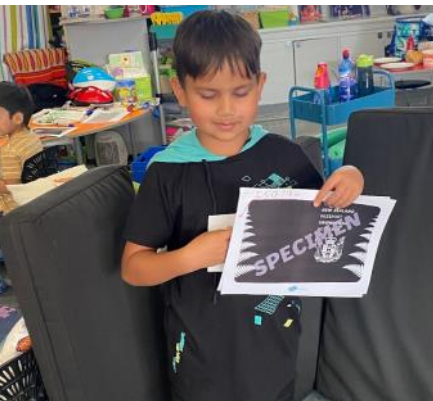
#### **Air Rutherford - RPS Ruma Ono Boarded a Flight around the world!**

Ākonga in ruma ono decided they wanted to build a plane and fly around the world. Our classroom quickly turned into the airport and our tamariki were extremely creative using a variety of equipment to build our plane to ensure we had a smooth flight. We even had seat belts and a wharepuku in the waiting lounge!

Each ākonga were required to complete their passport and purchase a ticket; with one ticket costing \$2,000,000 dollars! Our Pilots, Captain Riaan and Jaysten, armed with amazing sound effects ensured our takeoff was very authentic.

Passengers were treated to mini pizzas as part of the cabin service. Our in-house Moana movie was enjoyed by all.

This experience is related to our concept about air and will be captured in our daily writing. Kai Pai ruma 6 ākonga.



#### **Week 4 Singing Assembly**

On Thursday afternoon we celebrated NZ Music Week with a whole school singing assembly. Special thanks to our ukelele group who wowed us with three songs and were applauded with a rousing haka. We appreciate how hard you have worked and your courage to perform.



It was greatly appreciated. Thank you, Mr Symonds, for bringing us altogether to celebrate learning. It was a wonderful way to end the day.

#### **Manu Iti Hub Mapping**

The Manu Iti hub have been investigating mapping this week as a part of their learning in geometry.

Twila created a map of Room 2 that was so accurate, it could be used as a part of a treasure map game.

Here are Jermaine, Kisona and Twila reading coordinates on Twila's map, working out where the treasure is hidden in Room 2.







YOU ARE INVITED TO OUR

# Rutherford Whānau Morning

On Wednesday 29th May, during morning block we are having our Whānau Morning.

Classrooms will be open for you to join in with learning activities with your children.



You're invited to...

- See your child in action with their learning.
- See what learning looks like at RPS.
- Celebrate your child's participation and sense of self as a learner and work alongside your child

As much as possible the morning will be learning as usual with some integrated activities.

We will have morning tea in the staffroom to share afterwards.

We look forward to seeing you!

2nd Hand Goods Sale

Sausage Sizzle

Rutherford Primary School

# CAR BOOT SALE

Toys  
Clothes  
Sports  
Books  
Shoes

Plants  
Brick-a-brac  
Pots/Pans  
Pictures  
Music

**SUNDAY 23rd JUNE 9am - 12noon**

In the Rutherford Primary School Kotuku Street Carpark

**\$25.00 per carboot booking**

Sell your 2nd hand goods or come along and grab a bargain.

Make your booking with the school office on 09 834-5467  
Limited spaces available. Bookings close 10th June.

Fundraising for whānau in need

**LIFEWALK**

Lifewalk offers a Wellbeing Mentor/chaplain service free of charge at Rutherford Primary School.



This means that a Lifewalk Wellbeing Mentor/chaplain (Sandra Hickey) will be available to offer one-on-one support to students, once a week.

A Lifewalk Wellbeing Mentor is not a counsellor, but rather an adult who has been trained to be an effective listener and support for students in NZ schools.

Confidentiality is part of the school agreement except in situations of harm, where disclosure to RPS is required.

This is an opt-in service, please fill in the online form for your child if you would like them to use this service.

### LIFEWALK REGISTRATION

This service will be available on (Tuesdays from 10.45am to 2.45pm) each week.  
For more information, please go to [www.lifewalk.org.nz](http://www.lifewalk.org.nz)

# OUR BOOK FAIR OPENS ON MONDAY 24 JUNE

Catch the reading bug!



**SCHOLASTIC**

**VOLUNTEERS NEEDED!** Please contact Arlene by email [arlenec@rutherfordprimary.school.nz](mailto:arlenec@rutherfordprimary.school.nz)

## ATTENDANCE AT RUTHERFORD

Attending school every day unless sick makes a big difference to children's progress and social connection with their friends.

Our aim is to have all children at school at least 90% of the time. This means that children will have no more than 5 days off school each 10 week term. You will be contacted if attendance slips beyond 90%.

Please remember to contact us if your child is going to be absent. We need to code your child's roll according to the Ministry of Education's guidelines.

## SCHOOL ABSENCES

If your child is going to be absent from school for any reason please choose one of the following options:

- [Notify an absence through the Etap Parent Portal](#)
- [Phone 834 5467 and leave a message](#)
- [Or text the school cellphone 022 324 3942](#)

If the school is not informed of your child's absence/s they will be marked as truant.

## HOLIDAYS DURING TERM TIME

Please apply in writing to:

[principal@rutherfordprimary.school.nz](mailto:principal@rutherfordprimary.school.nz)

**Please also let your child's teacher know.**

Include the dates you will be absent. We will pre-code your child's attendance for those days.

These will be coded as an explained but unjustified absence.

## LATE TO SCHOOL

Students who arrive after **8.50am MUST report to the school office to sign in.**

Please make your child aware that if they arrive after the bell has gone, they must report to the office to sign in avoiding the need to get in touch with parents.

## LEAVING SCHOOL EARLY

Children are not permitted to leave the school grounds unless accompanied by a parent/caregiver.

The teacher and office staff must be informed and the child signed out before leaving the school grounds.

## CHANGE OF ADDRESS OR DETAILS

It's really important to get in touch with you in an emergency. Please let us know any changes to your address, phone number or caregivers so we can keep our records up to date.




GF & vegetarian options

# ORDER school lunches ONLINE...

delivered to school



[ezlunch.co.nz](http://ezlunch.co.nz)

Sushi Ami	Mondays and Thursdays
Subway	Wednesdays
Pita Pit	Tuesdays and Fridays

Menu items vary in price.  
Orders made online only. No cash sales.  
Orders close at 9am

## IMPORTANT NOTICES



### Helmets

Make sure your child wears a helmet when riding their bike or scooter to school. Bikes and scooters must be walked across pedestrian crossings and in the school grounds.

### Road safety

We remind you not to stop on yellow lines or drop off in driveways as this becomes a safety hazard for our children.

### Parking

Parents and caregivers are permitted to park at the church on Old Te Atatu Road and walk the short distance to school. Please arrange a meeting spot after school with your child/ren.

The school carpark is for staff, visitors and contractors only.

### Late to pick up your child/ren

Please phone the school office if you are stuck in traffic or are going to be late. We can arrange for your child to come to the library to wait for you. Siblings of Rutherford College students get picked up from the library.

### Dropping off lunches, hats, drink bottles

Drop belongings into the office for your child and we will call for them to collect at an appropriate time. Sometimes they may be in another class or in the swimming pool.