



Rutherford
Primary
School



17 JUNE 2024
17 Pipiri 2024

KIA ORA E TE WHĀNAU/GREETINGS FAMILIES

Nau mai, haere mai ki wiki waru. Welcome to week 8 of term 2.

As usual we have a busy last few weeks of term coming up. This week we have our Matariki disco and next week we have our Celebrate Learning at Rutherford conferences. We also currently have our health consultation running. Thanks to those who have already completed the survey. If you'd like more information about what we are currently doing in Health and Physical at Rutherford, there is detailed information on our school website. Please take the time to share your thoughts.

For our Matariki disco this week, we will be donating any funds raised to two of our families who are going through a really difficult time right now due to health challenges. Please help us to support the Clark's and the Prior's.

We are looking for helpers on the night and also for our wonderful bakers to provide baking we can sell. Please let Michelle know if you can help.

This week our Whakatauki o tēnei wiki/ whakatauki of this week is;

Ahakoā he iti he pounamu

Although it is small it is a treasure

This Whakatauki speaks to the small acts we can do for others that can make a big difference. This aligns with our school value of manaakitanga and thinking about the ways we can show kindness. This is an important whakatauki to think about leading up to Matariki, a time to reflect and spend time with those who are important. It is also important as we prepare to support families in our community who are going through a hard time.

WHAT'S COMING UP AT RUTHERFORD

I tēnei wiki - This Week

20 June Matariki Disco

UPCOMING EVENTS - TERM 2

- 24-28 June Scholastic Book Fair
- 25 June Rippa Rugby interschool (Year 4-6)
- 25 June Board of Trustees meeting
- 26 & 27 June Celebrate learning at Rutherford whānau meetings
- 27 June Combined schools Matariki event (Kapa Haka)
- 28 June Matariki holiday (School closed)
- 4 July End of Term Assembly
- 5 July Cle@R Learning Stories go home
- 5 July End of Term 2
- 22 July Start of Term 3

UPCOMING FUNDRAISERS

- 20 June Matariki Disco
- 12 June Matariki Raffle tickets go on sale
- 24-28 June Scholastic Book Fair
- 26 June Matariki Raffle Drawn
- Term 3 8 September Brick Show

All details for events will be advised. If you would like to help with fundraising please contact us at office@rutherfordprimary.school.nz.

ATTENDANCE MATTERS

OVERALL TO DATE: **89%** Of the 12% of children absent,
LAST WEEK: **88%** 6.5% of those were
LATE TO SCHOOL: **2.5%** absent due to illness.

BOOK FAIR - MONDAY 24 JUNE

Monday and Tuesday 9am-4pm

Wednesday 9am-6.30pm

Thursday 9am-5pm

Catch the reading bug!



Open during
Cle@R
Conferences

SCHOLASTIC

VOLUNTEERS NEEDED! Please contact Arlene by email arlenec@rutherfordprimary.school.nz if you can help out for an hour



CALLING ALL BAKERS!

We are having a bake sale at the Matariki Disco! If you would like to donate some baking please drop it off on the day to the office or bring it along on the night!



WHAT'S ON TOP? *He aha kei runga?*

Safe Streets

Last week I met with Auckland Transport, a representative from the Henderson-Massey Community board and staff from Rutherford College. I am pleased to inform you that Auckland Transport are committed to addressing the traffic concerns in Kōtuku and Toru Streets and will continue to work with us to identify ways to make it safe for our tamariki.

We need your help, and I ask you to please think about ensuring the drop off and pick up of your children is safe. This includes following the loop of the road and not turning around in these narrow streets. Kotuku Street connects in with Gloria Ave, which connects to Old Te Atatu Road and Te Atatu Road, so it is very easy to follow the street around.

Heads-up

We are having work done on both carpark in the holidays so there will only be pedestrian access to the school

Netball

We have a wonderful little team of year 3 children - The Rutherford Ravens, who are playing netball every Thursday afternoon. They are doing really well. We are very proud of them. A huge thank you to the group of parents who are coordinating this team and training them.

WHAT'S BEEN HAPPENING AT RUTHERFORD

I tērā wiki - Last week

Each week Whaea Amanda and Whaea Tiana provide an opportunity for tamariki to learn kapa haka. There is a junior school session open to any children in year 1-3 who want to come along and a senior school session where all children in year 4-6 get a two week rotation to learn kapa haka. The children have been learning basic kapa haka moves, waiata (song), kēmu (games), tītītōrea (small wooden sticks), ti rakau, (longer wooden sticks) and haka.

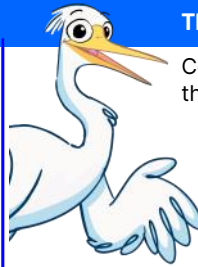
Thank you to Sione, a year 13 from Rutherford College who came along to help last week.



Kia kaha, kia maia, kia manawanui
Be Strong, be brave, be determined

Noho ora mai
Amanda Bennett
Tumuaki/Principal

THE RUTHERFORD WAY



Congratulations to the following children this week who show us The Rutherford Way.

- Christine Aiesi
- Amelia Caird
- Ava Chun
- Alba Helu
- Maya-Rose Te Maari
- Riley Wong



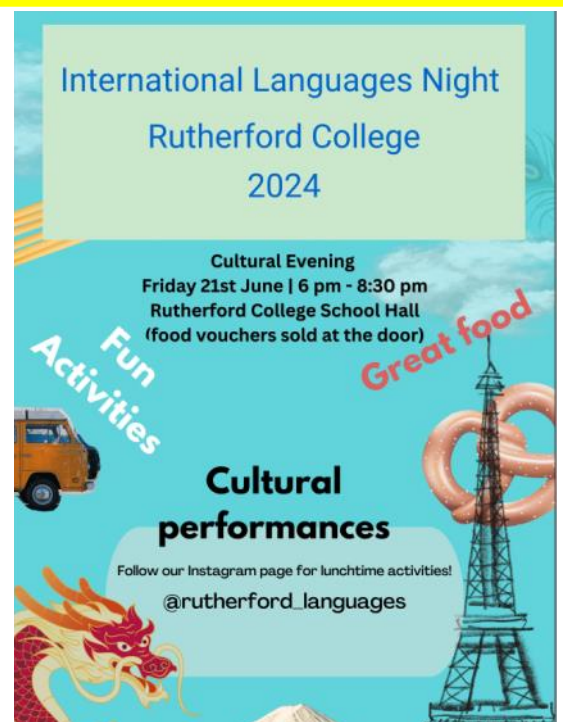
At Rutherford we show *Manaakitanga*.

- We include our friends in our games, such as playing basketball
- We follow the rules of the game
- We use positive words to encourage our friends during playing.



2024 Health and PE Consultation. We really appreciate your feedback so please take the time to complete the short survey.

[Health and Physical Education Consultation](#)





MATARIKI DISCO

THURSDAY 20th JUNE

MATARIKI THEME

JUNIOR DISCO years 1 - 3 at 5 - 6pm
SENIOR DISCO years 4 - 6 at 6 - 7pm

Bring some pocket money to purchase goodies on the night!
\$5.00 per family - \$2.00 per child.

Families that have children in both junior and senior can stay or choose which session they like.

We will be having a bake sale, so if you would like to donate baking please drop it to the staffroom on the day.

SAUSAGE
SIZZLE

AWESOME
DJ PAUL

DRINKS

BAKE
SALE

Note: Children will only be released to an adult at the end of the night, so please arrange to have someone meet them at the hall by 7pm.



Rutherford Primary School

Matariki Raffle



2 Movie Tickets

Complimentary pass



Gift Hamper from Unichem Peninsula Pharmacy



Parakai Springs vouchers



Family Pass to MOTAT

\$3 per ticket or two tickets for \$5

Raising funds for school beautification
Tickets will come home with your children or for sale at the school office.

Ticket sales close at 3pm on Tuesday 25 June
Raffle prizes will be drawn at 12 noon on Wednesday 26th June

Winners will be notified by phone or email.

LIFEWALK

Lifewalk offers a Wellbeing Mentor/chaplain service free of charge at Rutherford Primary School.



This means that a Lifewalk Wellbeing Mentor/chaplain (Sandra Hickey) will be available to offer one-on-one support to students, once a week.

A Lifewalk Wellbeing Mentor is not a counsellor, but rather an adult who has been trained to be an effective listener and support for students in NZ schools.

Confidentiality is part of the school agreement except in situations of harm, where disclosure to RPS is required.

This is an opt-in service, please fill in the online form for your child if you would like them to use this service.

LIFEWALK REGISTRATION

This service will be available on (Tuesdays from 10.45am to 2.45pm) each week.

For more information, please go to www.lifewalk.org.nz

OUR BOOK FAIR OPENS ON

MONDAY 24 JUNE

Catch the reading bug!



VOLUNTEERS NEEDED! Please contact Arlene by email arlenec@rutherfordprimary.school.nz

ATTENDANCE AT RUTHERFORD

Attending school every day unless sick makes a big difference to children's progress and social connection with their friends.

Our aim is to have all children at school at least 90% of the time. This means that children will have no more than 5 days off school each 10 week term. You will be contacted if attendance slips beyond 90%.

Please remember to contact us if your child is going to be absent. We need to code your child's roll according to the Ministry of Education's guidelines.

SCHOOL ABSENCES

If your child is going to be absent from school for any reason please choose one of the following options:

- [Notify an absence through the Etap Parent Portal](#)
- [Phone 834 5467 and leave a message](#)
- [Or text the school cellphone 022 324 3942](#)

If the school is not informed of your child's absence/s they will be marked as truant.

HOLIDAYS DURING TERM TIME

Please apply in writing to:

principal@rutherfordprimary.school.nz.

Please also let your child's teacher know.

Include the dates you will be absent. We will pre-code your child's attendance for those days.

These will be coded as an explained but unjustified absence.

LATE TO SCHOOL

Students who arrive after **8.50am MUST report to the school office to sign in.**

Please make your child aware that if they arrive after the bell has gone, they must report to the office to sign in avoiding the need to get in touch with parents.

LEAVING SCHOOL EARLY

Children are not permitted to leave the school grounds unless accompanied by a parent/caregiver.

The teacher and office staff must be informed and the child signed out before leaving the school grounds.

CHANGE OF ADDRESS OR DETAILS

It's really important to get in touch with you in an emergency. Please let us know any changes to your address, phone number or caregivers so we can keep our records up to date.




GF & vegetarian options

ORDER school lunches ONLINE...

delivered to school



ezlunch.co.nz

| | |
|-----------|-----------------------|
| Sushi Ami | Mondays and Thursdays |
| Subway | Wednesdays |
| Pita Pit | Tuesdays and Fridays |

Menu items vary in price.
Orders made online only. No cash sales.
Orders close at 9am

IMPORTANT NOTICES



Helmets

Make sure your child wears a helmet when riding their bike or scooter to school. Bikes and scooters must be walked across pedestrian crossings and in the school grounds.

Road safety

We remind you not to stop on yellow lines or drop off in driveways as this becomes a safety hazard for our children.

Parking

Parents and caregivers are permitted to park at the church on Old Te Atatu Road and walk the short distance to school. Please arrange a meeting spot after school with your child/ren.

The school carpark is for staff, visitors and contractors only.

Late to pick up your child/ren

Please phone the school office if you are stuck in traffic or are going to be late. We can arrange for your child to come to the library to wait for you. Siblings of Rutherford College students get picked up from the library.

Dropping off lunches, hats, drink bottles

Drop belongings into the office for your child and we will call for them to collect at an appropriate time. Sometimes they may be in another class or in the swimming pool.